



## THE GUILDFORD ASSOCIATION INC

HISTORIC GUILDFORD - FIRST SETTLED IN 1829

P.O. Box 115, Guildford 6935 Western Australia

ga@guildford.asn.au www.guildford.asn.au

---

# GUILDFORD MATTERS

---

## AUGUST 2019

### General Meeting

Tuesday August 20 – 7:30pm

Mechanics Institute

Meadow Street Guildford

### AUGUST 20 MEETING - TREE CHANGE

Professor Giles Hardy, of Murdoch University, will be presenting an update on attempts to revive the flooded gum trees dying on the Guildford floodplains. Last year the community got involved in trying to rescue these trees, receiving training on how to inject suitable trees with phosphite and a nutrient solution with the aim of boosting tree vigour.

Please come along to find out the outcome of our attempts to save these iconic trees. Be prepared – the news is not good.

A reminder that **Tuesday September 17** will be our AGM, followed by an Ordinary Meeting, at the Mechanics Institute at 7.30pm

### 20TH ANNIVERSARY OF SAVING THE SUGAR GUMS

Local primary school children are being urged to get creative and come up with a masterpiece celebrating Guildford's iconic sugar gum trees.

**Living Memories – Guildford Sugar Gum Poetry and Art Competition**, invites students to pay tribute to the trees through an artwork or poem.

The competition marks the 20<sup>th</sup> anniversary of the Guildford community's agreement with the City of Swan to preserve the historic sugar gums, planted in 1897 to celebrate Queen Victoria's diamond jubilee year.

The GA competition is supported by the City of Swan and the National Trust of Australia (WA), and there is a prize pool valued at \$1000.

GA president Barbara Dundas said the competition will enable students to better understand the history and stories behind the trees.

Representatives from the GA will be sending out posters and competition details to schools in Swan and Bassendean and are willing to talk to staff

about educational opportunities. Get your teachers to email ga@guildford.asn.au. The competition closes on September 23, 2019.

## **GUILDFORD CELEBRATES**

To mark the historic listing of Guildford Townsite on the State Register of Heritage Places in July, and the 20<sup>th</sup> anniversary of the saving of the sugar gums, the GA is hosting a special celebration dinner at the Guildford Hotel on Saturday August 31 at 6pm for 7.30pm.

Cost is \$60pp via **Trybooking.com** or cash in person to Andrew Kiely on 0413 348 961. There are still a

few tickets available, so please join us. You don't need to be a GA member to attend. This is about coming together as a community. Given the history, the Guildford Hotel is a fitting location for a community party.

**For one night only, shed your battle scars and come along and celebrate all we have achieved as a community!**

## **ST JUDES EXPANSION PLANS**

St Judes in East Guildford has a DA proposal for an expanded facility for residential care, clients unspecified. The proposal states:

- \* Removal/demolition of two (2) dwellings located on Lot 6 (No.26) and Lot 22 (No. 53), a new 43-bed residential care facility in their place. (123 beds for the whole site)

- \* Upgrades to the existing 76-bed residential care facility and amenities on the western portion of the site on Lot 350 (No.30) and Lot 151 (No.28) Swan Street East;

- \* New vehicle entry from Swan Street East and a new exit onto East Street;

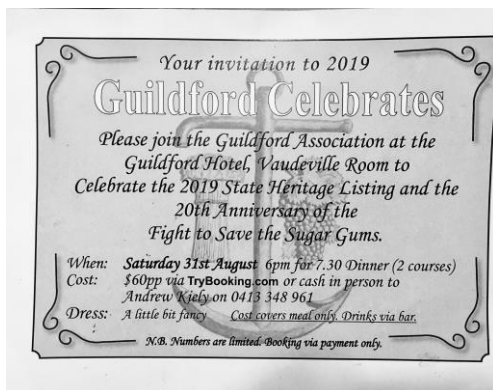
- \* Additional 12 on-site parking bays, drop-off bay and loading bay, and an additional three (3) street parking bays on Swan Street East; and,

- \* Operating hours to remain 24/7, a maximum of 26 employees on-site.

- \* It has been noted that demolition of early housing stock (1 house) is not seen as desirable in Pol-C-106.

- \* Plans show an electricity substation on Swan Street.

- \* The facility has already been deeded 12 street parking bays in Swan Street by the City and 3 more verge bays are being sought from the City.



\* The City has advised there is no record of any approvals given for institutions at Nos 26 and 28 Swan Street and the area is zoned residential R5.

The comment period closes August 27. <https://www.swan.wa.gov.au/Your-Community/Have-your-say/Planning-notice/Proposed-development-applications/DA414-19>

### **CRIME PREVENTION TIPS**

South Guildford Resident and Rate Payers Association Inc (find them on Facebook) held a meeting with Midland Police on Aug 5th. Midland Police have changed policing procedures and now focus on the Midland district, this has resulted in a reduction in crime.

Snr Sgt Jason Van Der Ende made a number of recommendations to reduce crime opportunities.

\* Report all incidents to Police direct, to help build profiles and focus patrol areas (Tel 131 444) – **Please don't just write about incidents on Facebook. They need to be reported.**

\* Neighbours should exchange phone numbers and information.

\* Do not make crime easy - hide or remove items from cars, do not leave valuables within in view of home windows.

***John Squire, President, South Guildford Community Association Inc***

### **GUILDFORD SONGFEST**

So far, some 35 choirs and Acts have registered for our third annual Songfest. Well-known groups like the Lost Quays and Men of the West will return to Guildford along with the award-winning Baden St Singers and the Giovanni Consort. We will also again have the heart-warming Spirit of the Streets Choir. Anyone prepared to help out with the Songfest please contact Yvonne on 0409 880 544. Our programme will be up soon so keep an eye on the website at [www.guildfordsongfest.com.au](http://www.guildfordsongfest.com.au) for full details.

Tickets to all concerts and workshops can be purchased through ***Trybooking.com*** or at the door.

### **NO SPRAYING, THANKS**

If you wish to maintain the footpath and verge outside your home yourself, please advise the City of Swan and ask that your name be placed on a register of 'No Spraying' - phone the City on 9267 9267

If your yellow triangles have been removed over time from the footpath, please advise the City, as contract weed spraying is commencing soon.

### **AROUND TOWN IN AUGUST**

**Swan Guildford Historical Society** Tour the Colonial Gaol and Taylor's Cottage in Meadow Street, Tues – Sat, 10am-2pm.

**Guildford Potters** Check out this gorgeous gallery at 23 Meadow Street, open daily 10am-4pm.

**St Matthew's** Messy Church is on the 4th Saturday of the month in St Matthew's Hall 4pm-6pm. Families are welcome to join in craft, stories, songs and a shared meal. For enquiries Tel: 9279 1141.

**The Garrick Theatre** *Teens At Garrick* production of Agatha Rex, about a schoolgirl standing up for what she believes in, is on till **August 17**. Go to [garricktheatre.asn.au](http://garricktheatre.asn.au) for bookings/information.

\*\*\*\*\*  
**The Guildford Association is your local resident and ratepayer Association. The Association's goals as stated in the Constitution are to:**  
**Preserve and promote the historic and rural nature of Guildford and its environs;**  
**Enhance and protect the quality of life of residents and ratepayers in the area.**

The Association is constituted under the *Associations Incorporation Act 1987* and operates under the requirements of that Act. Membership is **\$20** per person, **September 1 2019 – August 31 2020**. New members are welcome.

All new members and those returning after membership lapse of three months or more are asked to fill in and return the form below, either at a meeting or via [ga@guildford.asn.au](mailto:ga@guildford.asn.au)

\*\*\*\*\*

### **Application for Membership**

I hereby apply for membership of the Guildford Association Inc. I support the goals of the Association as stated in the Constitution.

Name(s): \_\_\_\_\_

Address: \_\_\_\_\_

Telephone Number(s): \_\_\_\_\_

Email: \_\_\_\_\_

Signed \_\_\_\_\_

Renewing Member

New Member

Please forward **\$20 per person** to Guildford Association, PO Box 115, Guildford WA 6935.

\*\*\*\*\*

You can pay subscriptions by **electronic banking**. The GA account details are:

**BSB – 066 109 Account – 00900704**

In the description to be sent to the GA bank account include your name and as much of your address as will fit. This will then appear directly in our bank account. You will not need a receipt as your bank account statement is your evidence of payment.

\*\* Newsletter kindly printed by Michelle Roberts MLA, Member for Midland \*\*